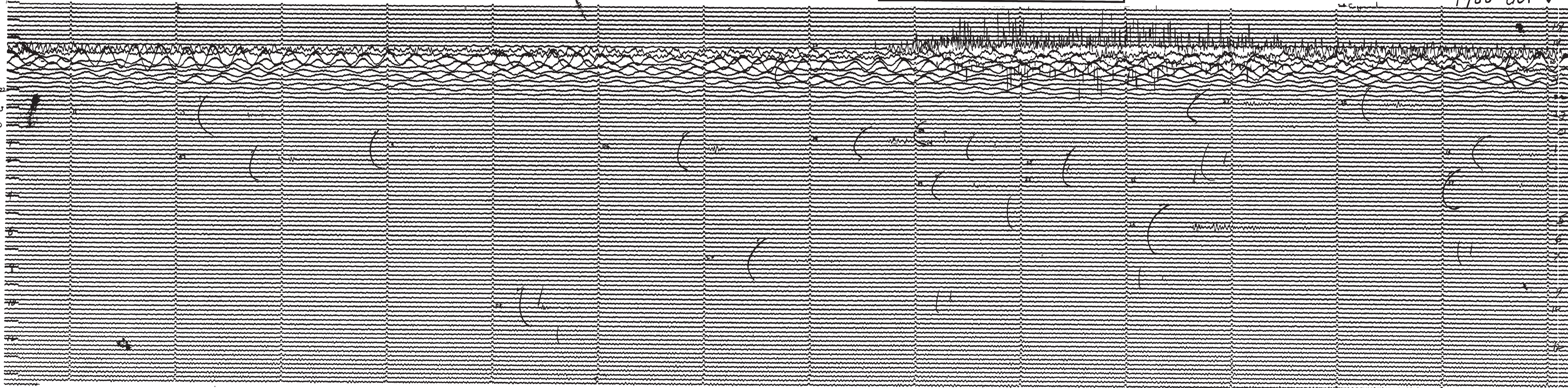


Chile Earthquake
5/22/1960 19:11 38.26 S 72.15 W
Magnitude 9.5 5,700 Fatalities

MAY 22 1960

1700 GCT ↓



BERKELEY (HAVILAND) 100KG BENIOFF VERTICAL UP ↑
37°52.4'N, 122°15.6'W elev. 81m To = 1.0 SEC; Tg = 0.4 SEC DOWN ↓

MAY 23 1960

1430 GCT ↑